

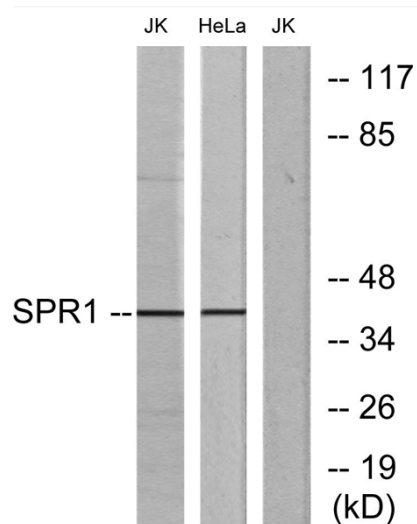


GPR68 Polyclonal Antibody

| | |
|----------------------------------|--|
| Catalog No | YP-Ab-13347 |
| Isotype | IgG |
| Reactivity | Human;Mouse |
| Applications | WB;IF;ELISA |
| Gene Name | GPR68 |
| Protein Name | Ovarian cancer G-protein coupled receptor 1 |
| Immunogen | The antiserum was produced against synthesized peptide derived from human SPR1. AA range:281-330 |
| Specificity | GPR68 Polyclonal Antibody detects endogenous levels of GPR68 protein. |
| Formulation | Liquid in PBS containing 50% glycerol, 0.5% BSA and 0.02% sodium azide. |
| Source | Polyclonal, Rabbit,IgG |
| Purification | The antibody was affinity-purified from rabbit antiserum by affinity-chromatography using epitope-specific immunogen. |
| Dilution | Western Blot: 1/500 - 1/2000. Immunofluorescence: 1/200 - 1/1000. ELISA: 1/5000. Not yet tested in other applications. |
| Concentration | 1 mg/ml |
| Purity | ≥90% |
| Storage Stability | -20°C/1 year |
| Synonyms | GPR68; OGR1; Ovarian cancer G-protein coupled receptor 1; OGR-1; G-protein coupled receptor 68; GPR12A; Sphingosylphosphorylcholine receptor |
| Observed Band | 41kD |
| Cell Pathway | Cell membrane; Multi-pass membrane protein. |
| Tissue Specificity | Found at low level in a wide range of tissues, but significantly expressed in lung, kidney, bone and nervous system. |
| Function | similarity:Belongs to the G-protein coupled receptor 1 family., |
| Background | similarity:Belongs to the G-protein coupled receptor 1 family., |
| matters needing attention | Avoid repeated freezing and thawing! |
| Usage suggestions | This product can be used in immunological reaction related experiments. For more information, please consult technical personnel. |



Products Images



Western blot analysis of lysates from Jurkat and HeLa cells, using SPR1 Antibody. The lane on the right is blocked with the synthesized peptide.